
500 SERIES

PILOT'S GUIDE ADDENDUM

TRAFFIC SYSTEM DISPLAY INTERFACE

The GARMIN GNS 530 and GPS 500 (main software version 2.09 and above), provide the display interface and control for the following:

- Goodrich SKYWATCH® HP Traffic Alert/Advisory System (Model SKY899)
- Bendix/King® KTA 870 TAS/KMH 880 Multi-Hazard Awareness System
- Ryan 9900BX TCAD

NOTE: *This addendum assumes the user has experience operating the GNS 530/GPS 500 and the applicable traffic advisory/alert system.*

1. GOODRICH SKYWATCH HP Traffic Alert/Advisory System (Model SKY899), Bendix/King KTA 870 Traffic Advisory System and KMH 880 Multi-Hazard Advisory System.

The control and display of the SKYWATCH HP and the KTA 870/KMH 880 is the same as the SKYWATCH SKY497 (including the TCAS-like symbology) as described in the GNS 530 and GPS 500 Pilot's Guides. The traffic display range selections are different:

- **GOODRICH SKYWATCH HP (Model SKY899):**
 - 2 nm, 2 and 6 nm, 6 and 12 nm, 12 and 24 nm.
- **Bendix/King KTA 870/KMH 880:**
 - 2 nm, 2 and 6 nm, 6 and 12 nm, 12 and 24 nm, 20 and 40 nm.

NOTE: *The maximum ranges for the SKYWATCH SKY497 have been changed from 2 nm, 2 and 5 nm, 2 and 6 nm to the following:*

- 2 nm, 2 and 6 nm, 6 and 12 nm.

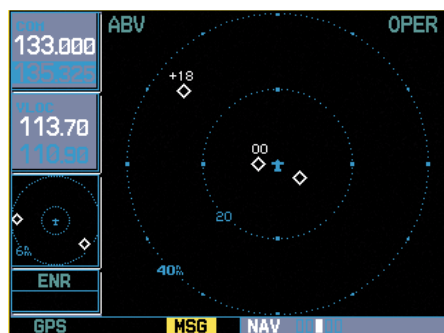


Figure 1. Example of Bendix/King KTA 870/KMH 880 traffic being displayed near the 40 nm range.

2. Ryan 9900BX TCAD

The control and display of the Ryan 9900BX TCAD is the same as the Ryan 9900B TCAD as described in the GPS 500 and GNS 530 Pilot's Guides with the following exceptions:

- TCAS-like symbology is used as opposed to the 9900B symbology (as shown in Figure 1).
- Ranges are manually controlled instead of automatically resizing to the current shield.
- The traffic display range selections are different:
 - 2 nm, 2 and 6 nm, 6 and 12 nm, 12 and 24 nm.



© Copyright 2002
GARMIN Ltd. or its subsidiaries

GARMIN International, Inc.
1200 East 151st Street, Olathe, Kansas 66062, U.S.A.

GARMIN (Europe) Ltd.
Unit 5, The Quadrangle, Abbey Park Industrial Estate, Romsey, SO51 9AQ, U.K.

GARMIN Corporation
No. 68, Jangshu 2nd Road, Shijr, Taipei County, Taiwan

www.garmin.com

Part Number 190-00181-14 Rev. A
